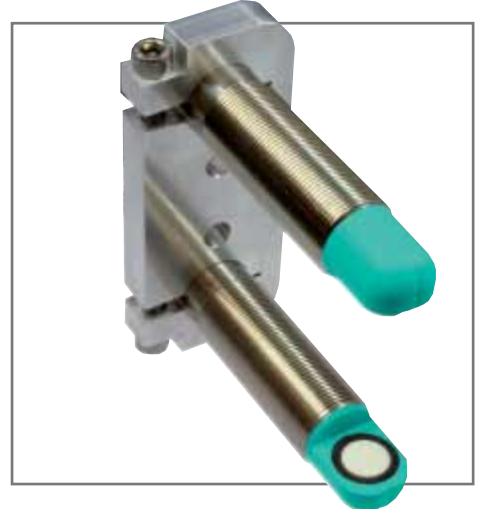


**ULTRASONIC  
DOUBLE SHEET CONTROL**



# DOUBLE SHEET CONTROL

Ultrasonic double sheet detection is used for double sheet detection in all situations where the automatic distinction between single and double sheets is required in order to protect machinery or avoid waste.

## UDC-18GM50

The new ultrasonic double sheet control UDC-18GM50 is based on ultrasonic thru-beam sensing technology.

- It detects:
- No sheet (air)
  - Single sheet
  - Double sheet

The sensor is equipped with four different evaluation programs that enable the detection of a wide variety of materials. The user can select the program best suited for the application at hand.

No TEACH-IN is required.

- Simple program selection for evaluation of application-specific materials
- Output pulse extension of 12 ms possible

**NO TEACH-IN  
NECESSARY!**

**DETECTS A WIDE  
RANGE OF MATERIALS**

# LABEL DETECTION

## ULTRASONIC SYSTEM FOR THE DETECTION OF LABELS AND BASE MATERIALS

The packaging industry relies on unique labels to set products apart from others on the market. Labels come in a variety of shapes, colors, materials, and thicknesses and require sensing technology that can adapt to various media.

Pepperl+Fuchs' ultrasonic thru-beam sensors are designed to identify misfeeds for a wide range of media. The ultrasonic beam is insensitive to printing, colors, and glossy surfaces and can detect transparent, reflective, or metallic labels. The detection threshold is easily adjusted to the appropriate material thickness for each specific application. The 18-mm-diameter detector is rated for IP67.

- Extremely accurate
- Material-independent label detection
  - paper labels
  - transparent materials
  - colored and reflective surfaces
- Short design / only 55 mm long
- High processing speeds possible



# SPLICE DETECTION

## ULTRASONIC SYSTEM FOR SPLICE DETECTION

In industry, the types of splices vary as widely as the applications in which they are used. Vehicle windshields, aircraft parts, domestic appliances or packaging material all require different spliced connections. Especially in the last case, it must be ensured that no splices are visible on the packaging.

The new ultrasonic sensor UGB-18GM55 detects these splices with the highest degree of precision. It is also highly resistant to environmental conditions and thus offers high operational safety.

- Short design / only 55 mm long
- Insensitive to print, colors, and reflective surfaces
- Very high processing speeds are possible
- Pulse extension



## FEATURES · ACCESSORIES

- No TEACH-IN required
- Ultrasonic system reliably detects zero, one, or two (overlapping) sheets
- Insensitive to print, colors, or glossy surfaces
- Material weight from 10 g/m<sup>2</sup> to 2000 g/m<sup>2</sup>
- Very broad range of materials, from very thin papers to very heavy paper to thin sheet metal and plastic or metal foils
- Perpendicular or angled sensor mounting
- Signal output via 3 short-circuit-resistant, polarity-insensitive PNP switching outputs



Double sheet control	Transducer	Output	Overall length	
			Receiver	Transmitter
UDC-18GM-400-3E3	straight	3 x PNP break contact	74 mm	22 mm
UDC-18GM50-400-3E3	straight	3 x PNP break contact	50 mm	22 mm
UDC-18GMA-400-3E3	angled	3 x PNP break contact	74 mm	74 mm

- All outputs are also available as NPN or make contact versions. Various sleeve lengths and transducer orientations can be combined upon request.

### ASSEMBLY ACCESSORIES

- MH-UDBo1 mounting bracket



- UDB-Cable-1 m  
Extension cable between transmitter and receiver; length: 1 m
- UDB-Cable-2 m  
Extension cable between transmitter and receiver; length: 2 m

# FACTORY AUTOMATION – SENSING YOUR NEEDS



Pepperl+Fuchs sets the standard in quality and innovative technology for the world of automation. Our expertise, dedication, and heritage of innovation have driven us to develop the largest and most versatile line of industrial sensor technologies and interface components in the world. With our global presence, reliable service, and flexible production facilities, Pepperl+Fuchs delivers complete solutions for your automation requirements – wherever you need us.

## Contact

Pepperl+Fuchs GmbH  
Königsberger Allee 87  
68307 Mannheim · Germany  
Tel. +49 621 776-4411 · Fax +49 621 776-27-4411  
E-mail: [fa-info@de.pepperl-fuchs.com](mailto:fa-info@de.pepperl-fuchs.com)

## Worldwide Headquarters

Pepperl+Fuchs GmbH · Mannheim · Germany  
E-mail: [info@de.pepperl-fuchs.com](mailto:info@de.pepperl-fuchs.com)

## USA Headquarters

Pepperl+Fuchs Inc. · Twinsburg · USA  
E-mail: [sales@us.pepperl-fuchs.com](mailto:sales@us.pepperl-fuchs.com)

## Asia Pacific Headquarters

Pepperl+Fuchs Pte Ltd · Singapore  
Company Registration No. 199003130E  
E-mail: [sales@sg.pepperl-fuchs.com](mailto:sales@sg.pepperl-fuchs.com)

[www.pepperl-fuchs.com](http://www.pepperl-fuchs.com)

 **PEPPERL+FUCHS**  
SENSING YOUR NEEDS